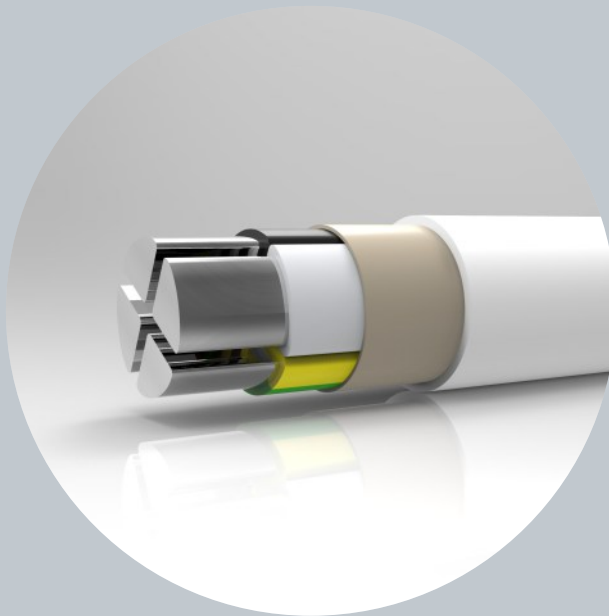


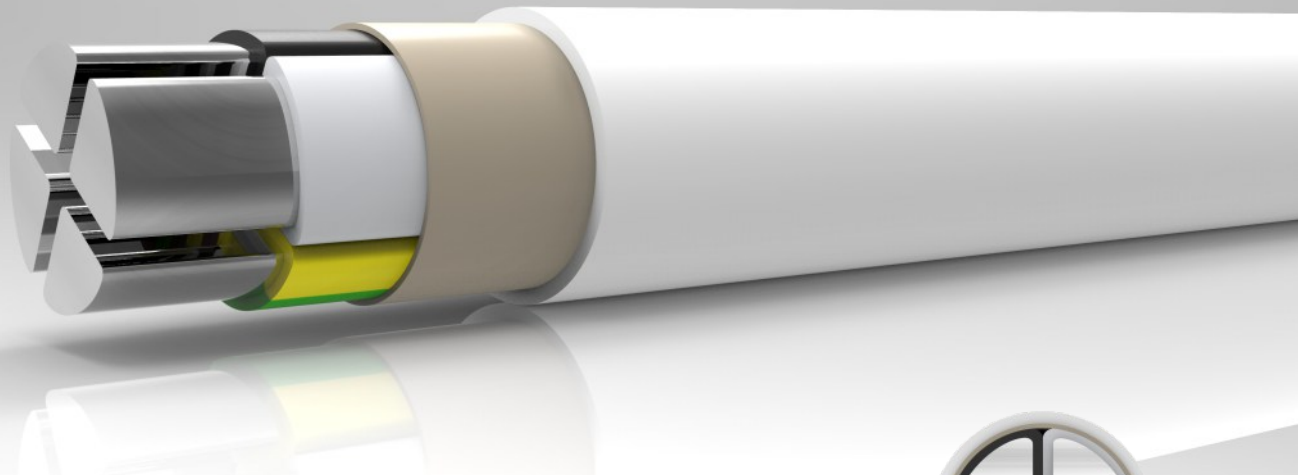


**Aluminium power cables for voltage up to 1kV**



# **NOIK-AL-M**

**Halogen-free energy cable**



### Aluminium power cables for voltage up to 1kV



#### APPLICATION

Power distribution cables in power stations, industrial installations and switchgears, as well as in local mains. For fixed installation underground, in interior premises, cable ducts, in the open air, in water – as permitted by the local building regulations – if no risk of any mechanical damage is to be expected.



#### CONSTRUCTION

- Aluminum conductor, round solid (RE), sector-shaped solid (SE)
- Core insulation (XLPE)
- Inner covering (plastic tape)
- Sheath (halogen-free polymer compound, UV resistant)



#### TEHNIICAL DATA

**Standard:** IEC 60502 (HD 603)  
**Rated voltage:** 0.6 / 1kV  
**Test voltage:** 4 kV / 50 Hz

#### Temperature range

Laying temperature: min. - 5 °C  
 Conductor temperature: max. +90 °C  
 Short-circuit temperature: max. +250 °C / 5 s

**Bending radius (min):** 10 x Ø of cable

#### Fire properties:

Halogen free: IEC/EN 60754-1  
 Smoke density: IEC/EN 61034  
 Fire test: IEC/EN 60332-1





CONSTRUCTION DATA OF POWER CABLES / NOIK-AL-M						
Number of cores x nominal cross section	Max. conductor resistance	Current rating in the ground	Current rating in the air	Outer diameter	Total weight (kg/km) ca.	Standard lengths / packig
(mm <sup>2</sup> )	(Ω / km)	(A)	(A)	(mm) ca.	(kg/km)	(m)
<b>4x16 RE</b>	1,91	78	51	20	500	1000 D
<b>4x25 RE</b>	1,200	100	77	25,8	720	1000 D
<b>4x35 SE</b>	0,868	125	95	28,6	800	1000 D
<b>4x50 SE</b>	0,641	150	117	27,2	850	1000 D
<b>4x70 SE</b>	0,443	185	148	31,2	1150	500 D
<b>4x95 SE</b>	0,320	220	180	34,5	1480	500 D
<b>4x120 SE</b>	0,253	255	209	39,0	1850	500 D
<b>4x150 SE</b>	0,206	280	240	42,5	2280	500 D
<b>4x185 SE</b>	0,164	330	274	47,5	2850	500 D
<b>4x240 SE</b>	0,125	375	323	53,1	3620	500 D



*Subject to technical changes.*

NOIK-AL-M